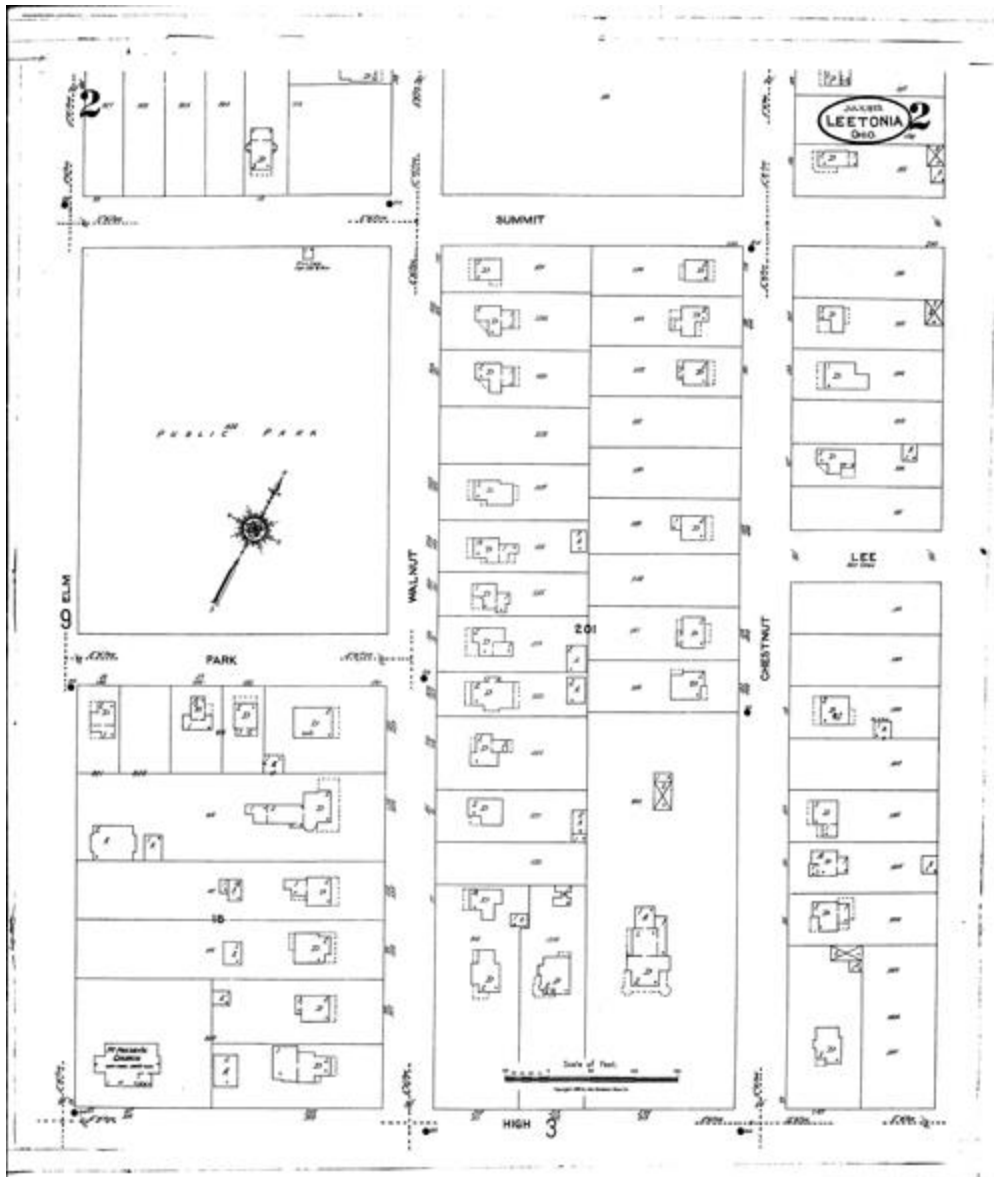


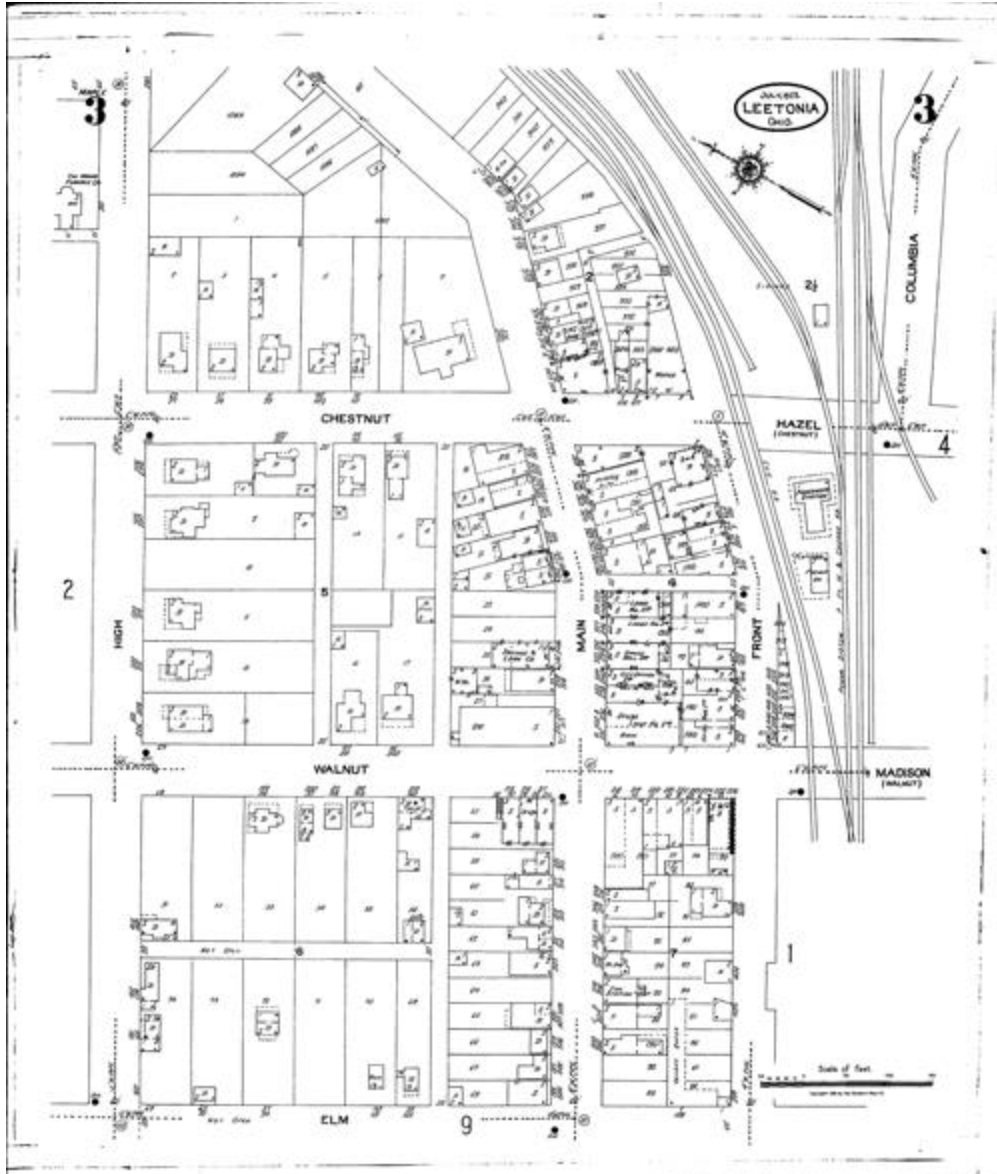
STREETS: Elm at Front; Front [122-238]; Lisbon Road; Madison [2-38]; Madison [76-114]; Ridge [214-281]; State [214-268];

SPECIALS: Leetonia Tool Co. The; Mellinger I. F. Lumber and Builders Supplies; Standard Oil Co.



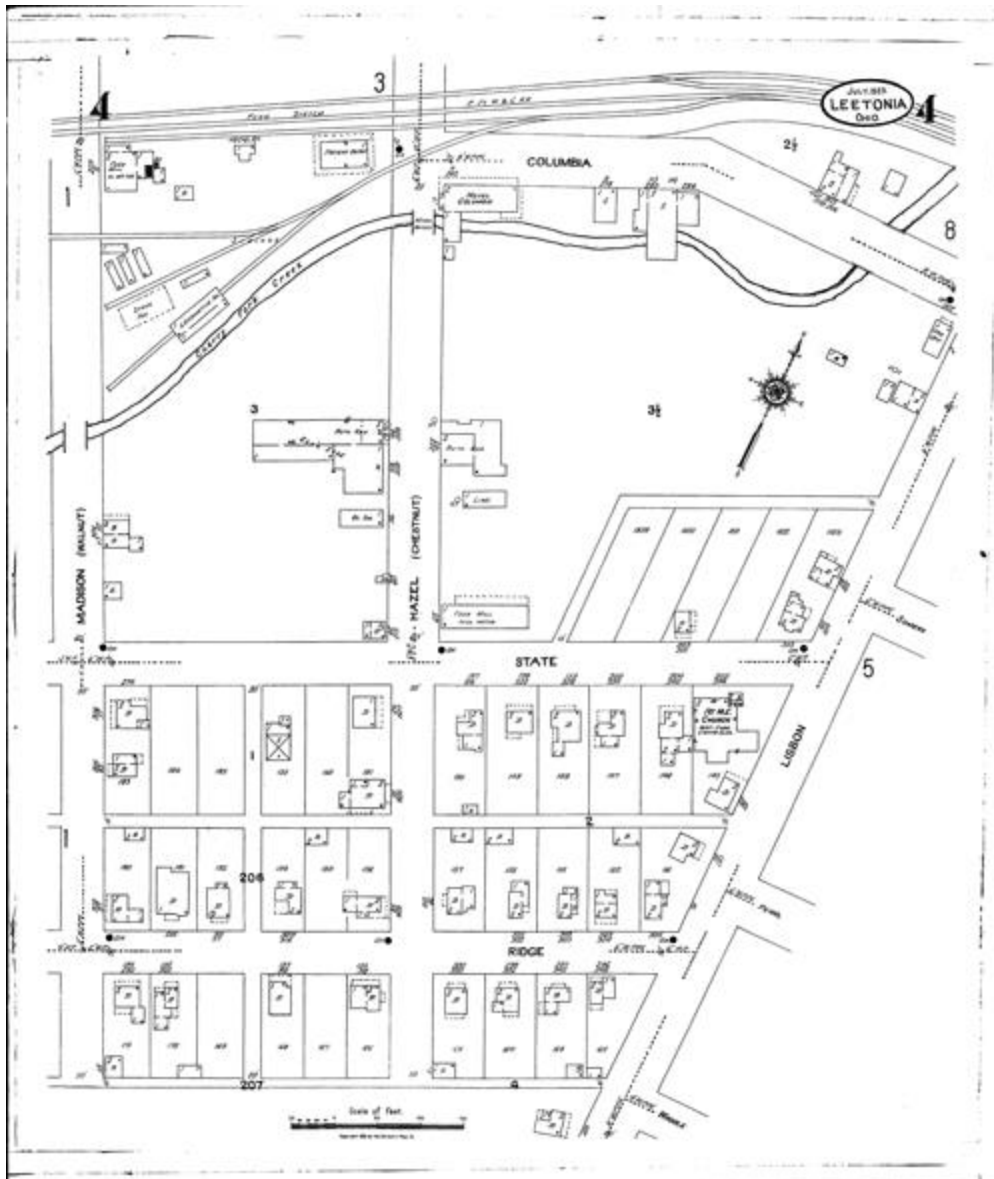
STREETS: Chestnut [73-194]; Elm [77-195]; High [161-247]; Lee; Park [138-171]; Summit [99-200]; Walnut [77-198];

SPECIALS: First Presbyterian Church



STREETS: Chestnut [1-68]; Columbia [259-291]; Elm [1-69]; Front [205-304]; Hazel [1-10]; High [160-280]; Main [193-330]; Walnut [1-70];

SPECIALS: City Offices; Erie R. R. Freight Ho. & Passenger Sta.; Fire Stations; Hanna Furnace Co. The; Post Office



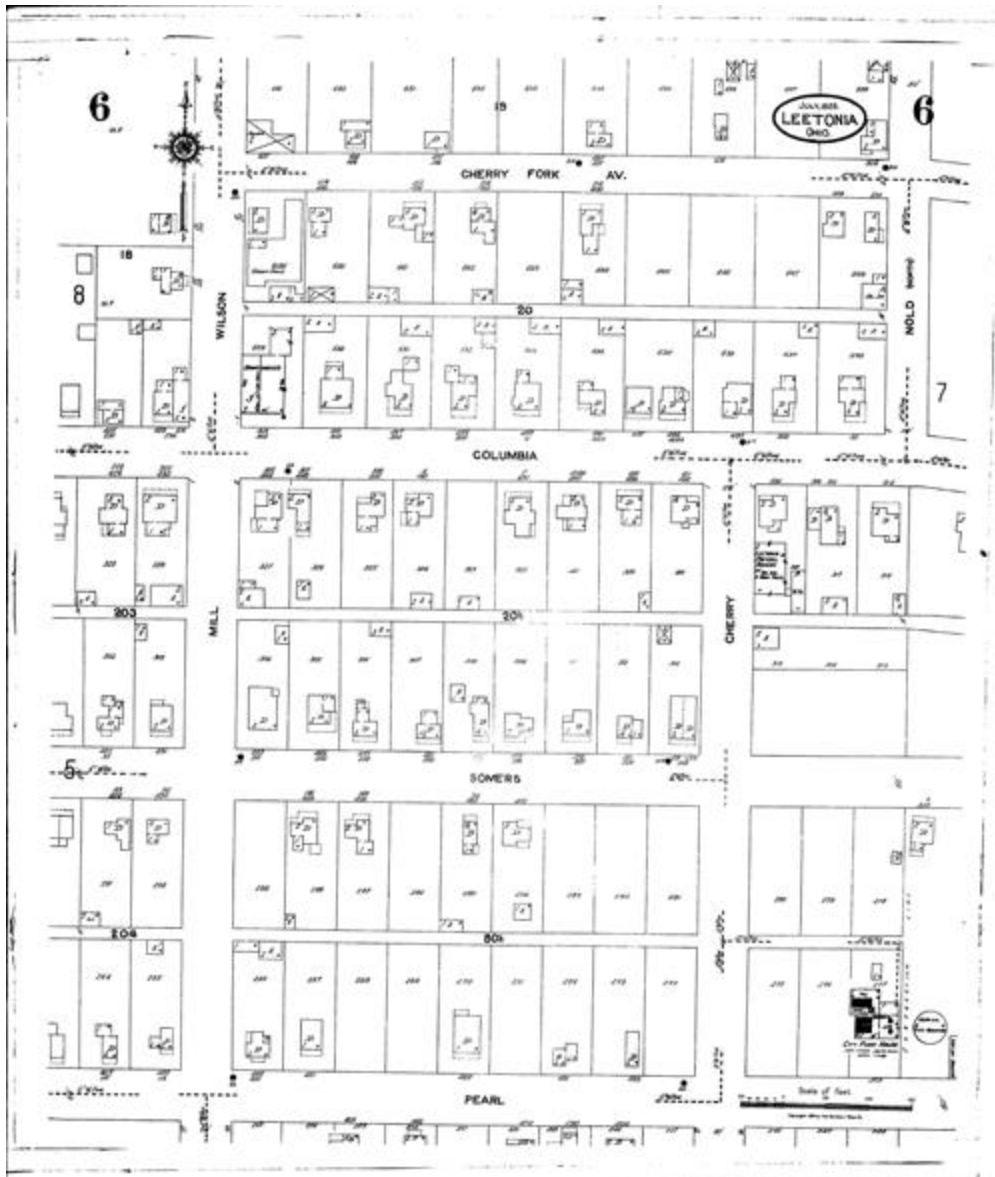
STREETS: Columbia [261-322]; Hazei [12-117]; Lisbon Road [2-104]; Madison [1-115]; Ridge [290-351]; State [274-355];

SPECIALS: Fire Stations; First M. E. Church; Hanna Furnace Co. The; Hotel Columbia; P. Ft. W. & C. R. R.--Freight Depot; P. Ft. W. & C. R. R.--Locomotive House; P. Ft. W. & C. R. R.--Waiting Room



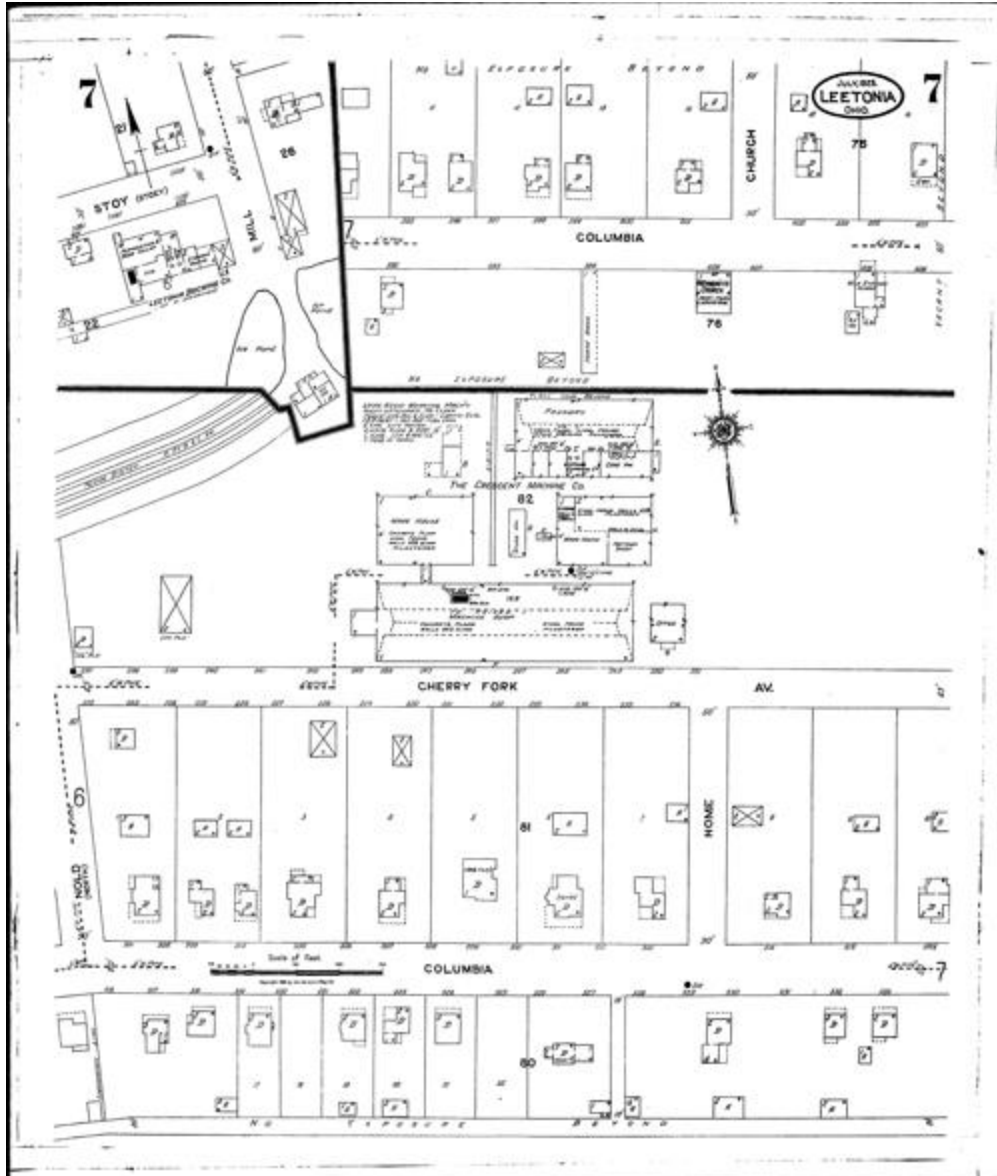
STREETS: Columbia [328-420]; Lisbon Road [1-123]; Pearl [326-421]; Pearl [422-430]; Sommers [327-420]; Spruce [1-120]; Waddle [S27-396];

SPECIALS: Fire Stations; Hanna Furnace Co. The; Public School; St. John's Lutheran Church; St. Paul's Ev. Luth'n Church; Y. & O. R. R. (Elec.)--Car Barn and Repair Shop; Y. & O. R. R. (Elec.)--Station



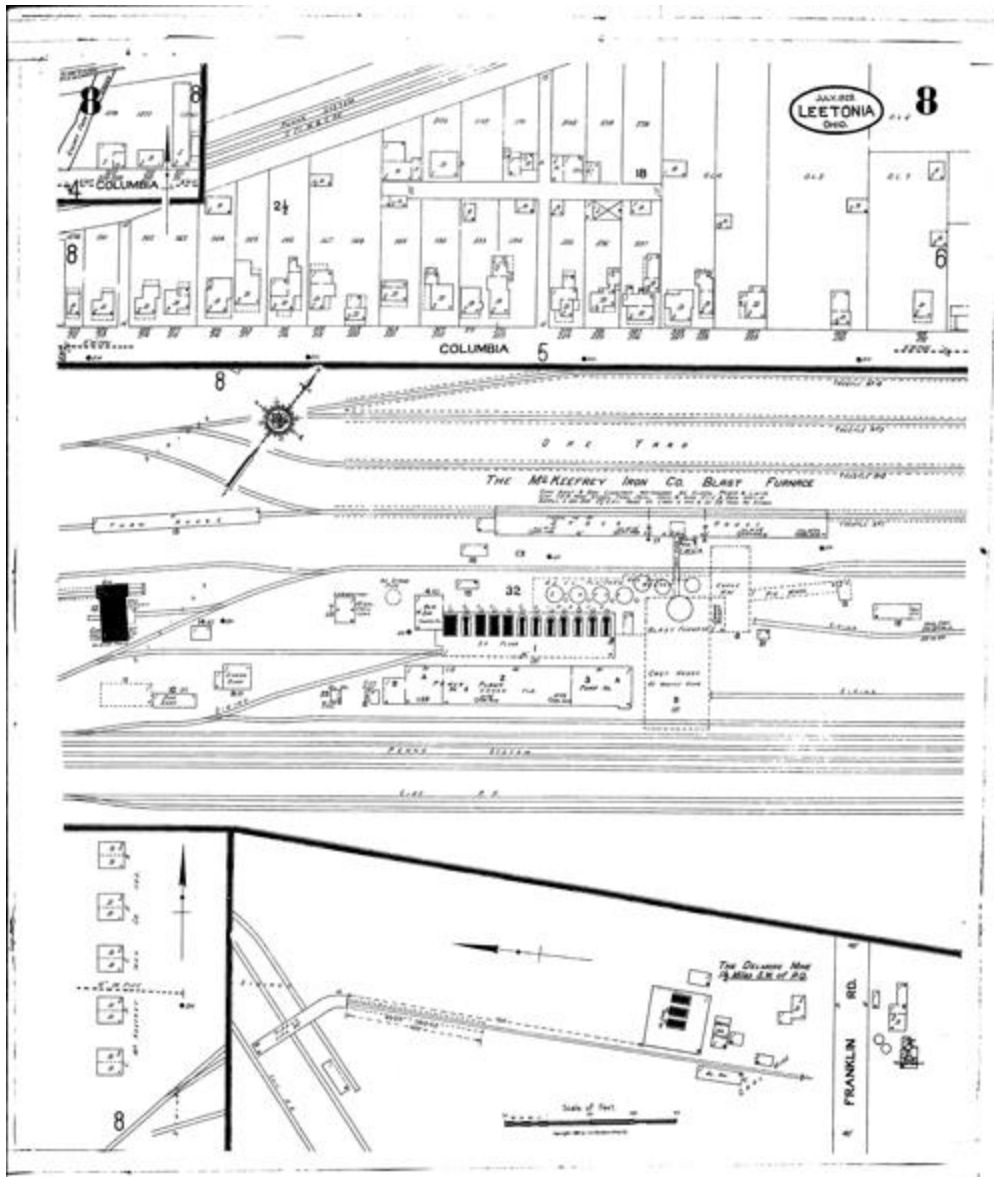
STREETS: Cherry Fork Ave. [437-512]; Cherry [1-78]; Columbia [425-514]; Mill [1-78]; Nold [2-42]; Pearl [427-516]; Sommers [424-517]; Wilson [1-42];

SPECIALS: City Pump House; Hanna Furnace Co. The; Leetonia Pretzel Bakery



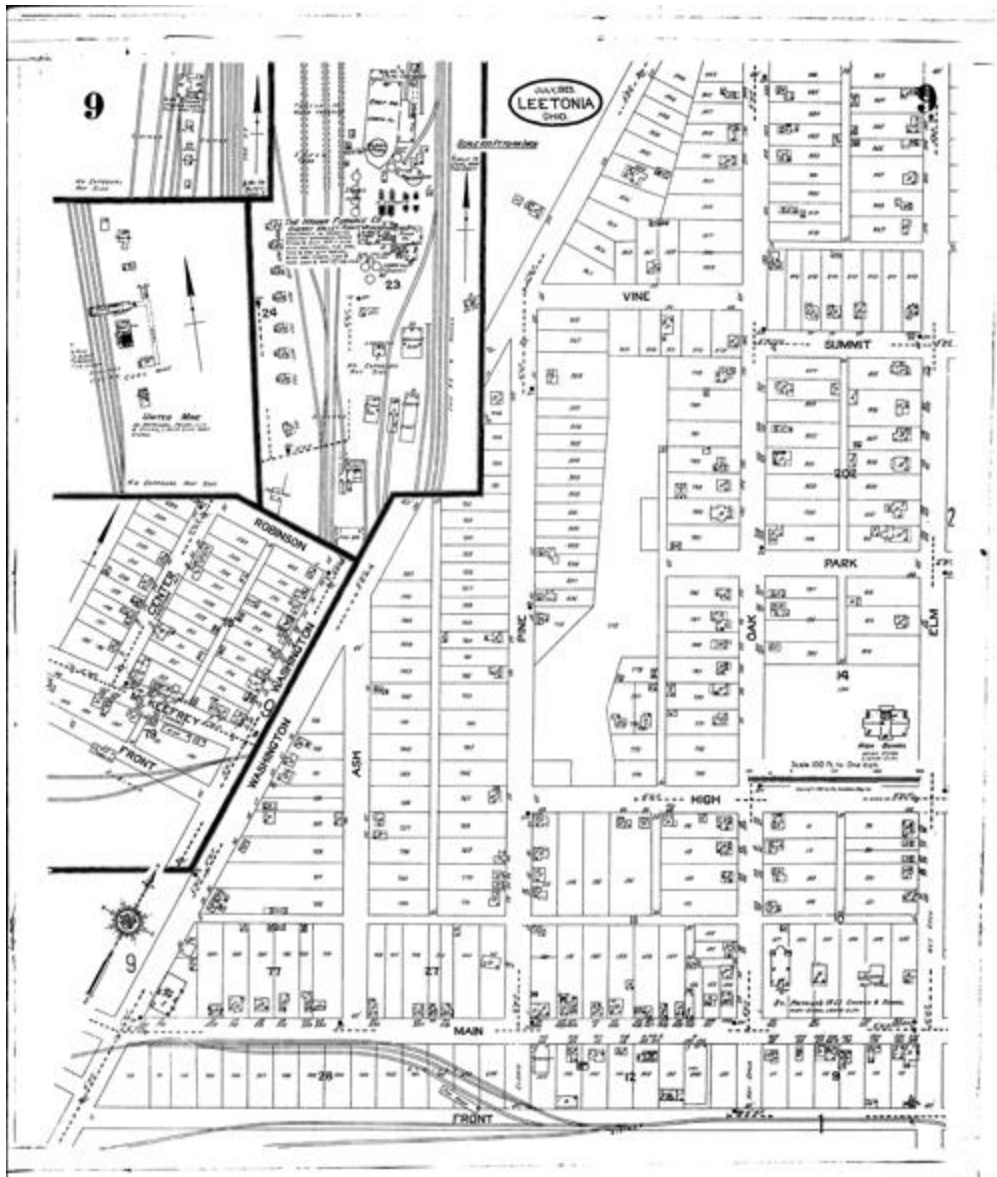
STREETS: Cherry Fork Ave. (arbitrary numbers) [222-251]; Church; Columbia (arbitrary numbers) [392-409]; Columbia (arbitrary numbers) [501-534]; Home; Mill [121-122]; Nold [1-43]; Stoy [414-427];

SPECIALS: Crescent Machine Co. The; Hanna Furnace Co. The; Leetonia Brewing Co.; Mennonite Church



STREETS: Columbia [309-419]; Franklin Road;

SPECIALS: Delmore Mine The; Hanna Furnace Co. The; McKee Iron Co. Blast Furnace and Houses



STREETS: Ash [1-100]; Center [1-44]; Elm [2-238]; Front [1-183]; Front at Washington; High [68-157]; Main [1-184]; McKeefrey [1-46]; Oak [1-244]; Park [100-129]; Pine [1-166]; Robinson [2-34]; Summit [68-97]; Vine [1-48]; Washington [1-252];

SPECIALS: Hanna Furnace Co. The; High School; St. Patrick's R. C. Church and School; United Mine