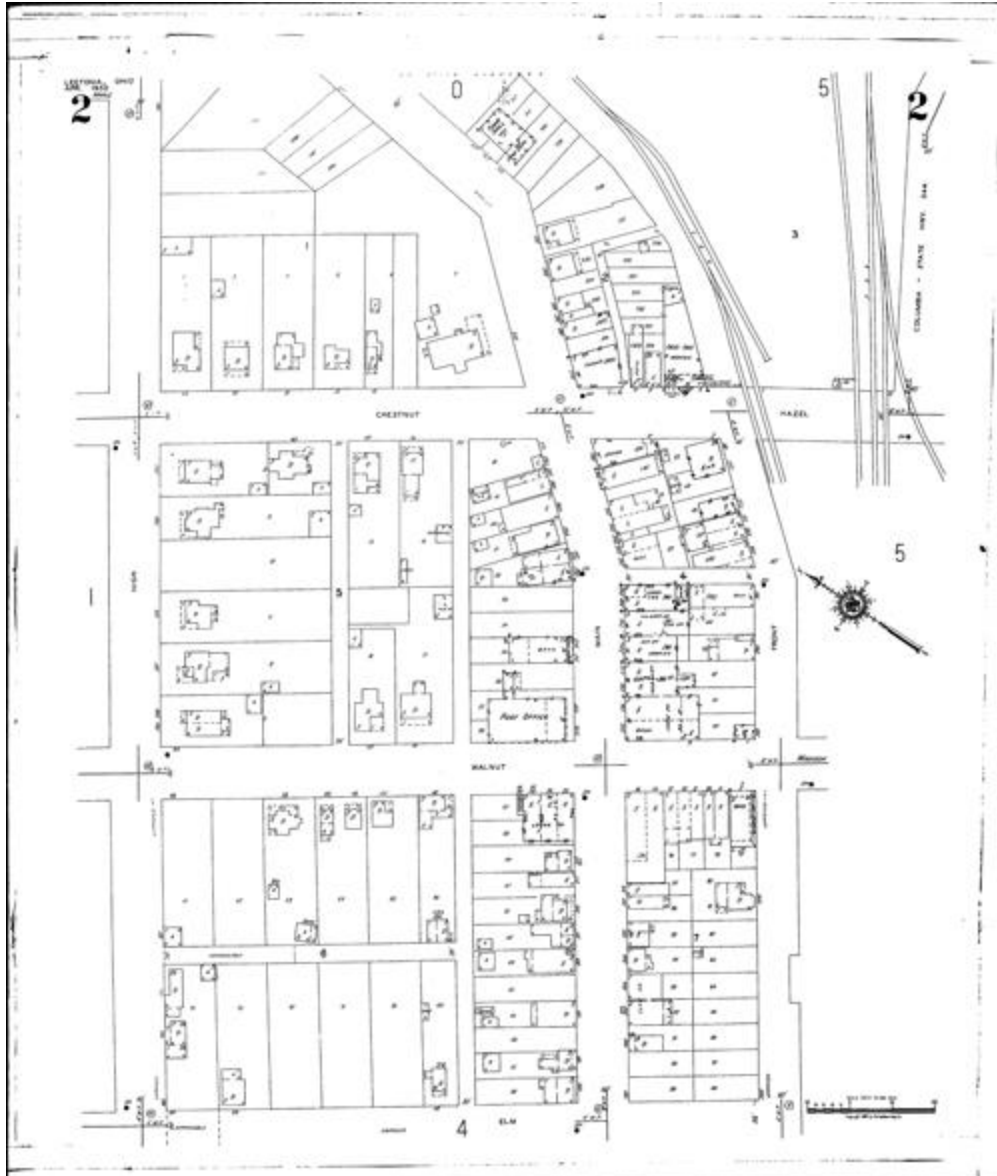


STREETS: Chestnut [71-264]; Elm [246-265]; Elm [71-245]; Forest; High [161-279]; Lee; Maple; Park [130-171]; Summit [96-203]; Walnut [71-320]; Wood;

SPECIALS: First Presbyterian Church; Leetonia High School



STREETS: Chestnut [1-70]; Columbia N. S. near Hazel; Elm [1-69]; Front [201-285]; Front [286-305]; Hazel [1-15]; High [160-280]; Main [190-331]; State Highway No. 344; Walnut [1-70];

SPECIALS: Fire Department; Post Office; Town Hall



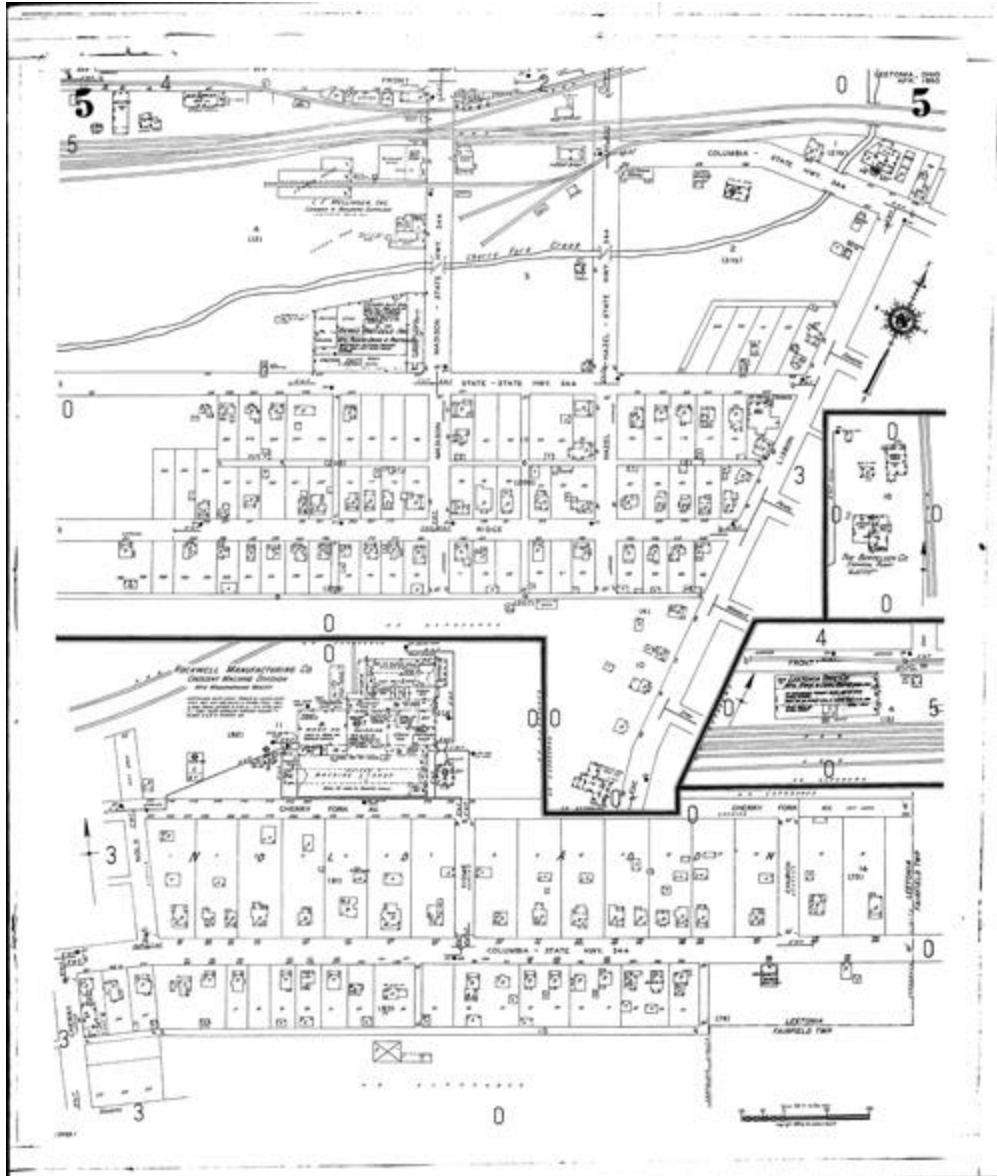
STREETS: Anglemyer [330-399]; Cherry Fork Ave. [430-511]; Cherry [1-29]; Cherry [31-90]; Columbia [330-499]; Columbia [501-511]; Lisbon [1-173]; Mill [1-130]; Nold [2-50]; Ohio [341-399]; Pearl [320-519]; Somers [320-499]; Somers [500-520]; Spruce [1-174]; State Highway No. 344; Stoy [320-435]; Waddle [320-399]; Wilson [1-40];

SPECIALS: City Pump House; English Lutheran Church; Public School; State Highway Dept. Garage



STREETS: Ash [1-80]; Center [1-48]; Elm [2-244]; Front [1-199]; High [60-159]; Main [1-189]; McKeefrey [1-50]; Oak [1-246]; Park [30-129]; Pine [1-168]; Robinson; Summit [60-95]; Vine [1-50]; Washington [1-240];

SPECIALS: St. Patrick's Church & School (R. C.)



STREETS: Cherry Fork Ave. [222-237 arb.]; Cherry [2-30]; Church [1-30]; Columbia [260-329]; Columbia [500-512]; Columbia [513-798]; Front [130-284]; Hazel [16-119]; Hazel [2-14]; Home [1-30]; Lisbon [2-154]; Madison [1-120]; Nold [1-49]; Ridge [200-351]; Somers [501-519]; State Highway No. 344; State [150-355];

SPECIALS: Berg's Bretzels Inc.; Bertlesen Co. Chemical Plant; E. R. R. Passenger Depot; First Methodist Church; Guide Co. Machine Shop; Leetonia Hotel; Leetonia Tool Co. Rock & Coal Drills Mfg.; Mellinger I. F. Inc. Lumber & Builders Supplies; Mennonite Church; P. R. R. Depots; Rockwell Mfg. Co. Crescent Machine Div.