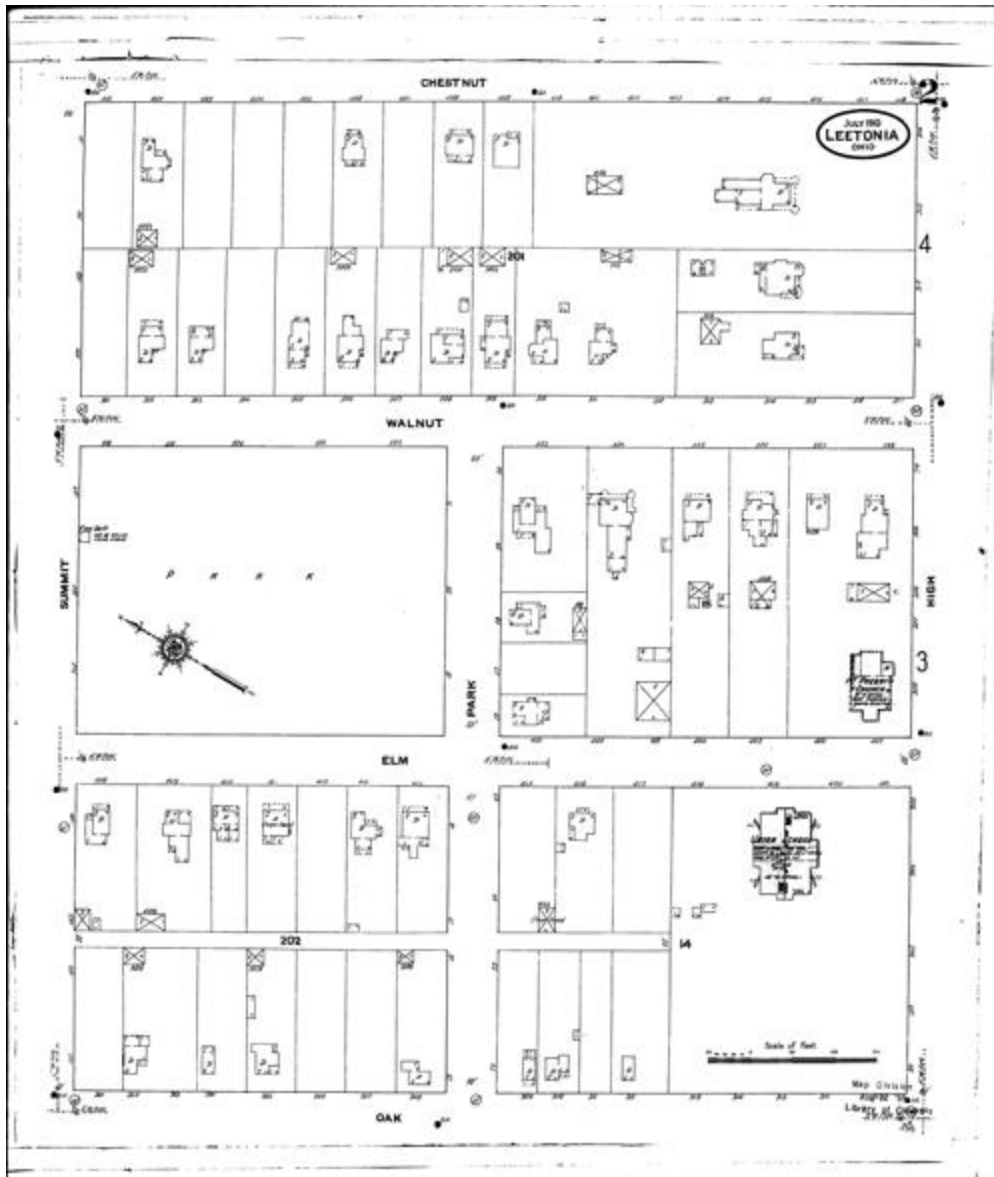


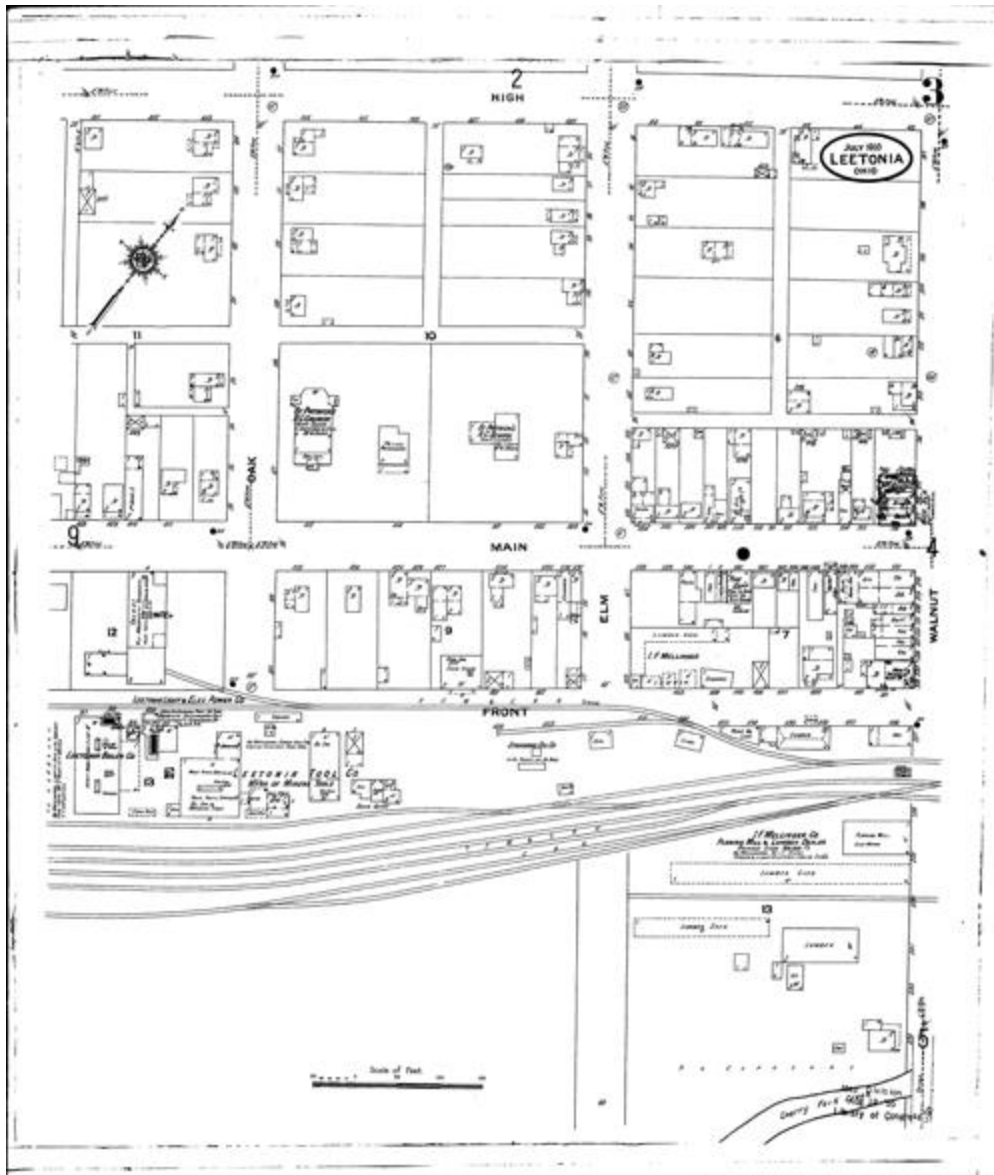
STREETS: Main [601-616]; Mill [near Stoe]; Stoe;

SPECIALS: Cherry Valley Iron Works; Leetonia Brewing Co.; Slater E. Slaughter House



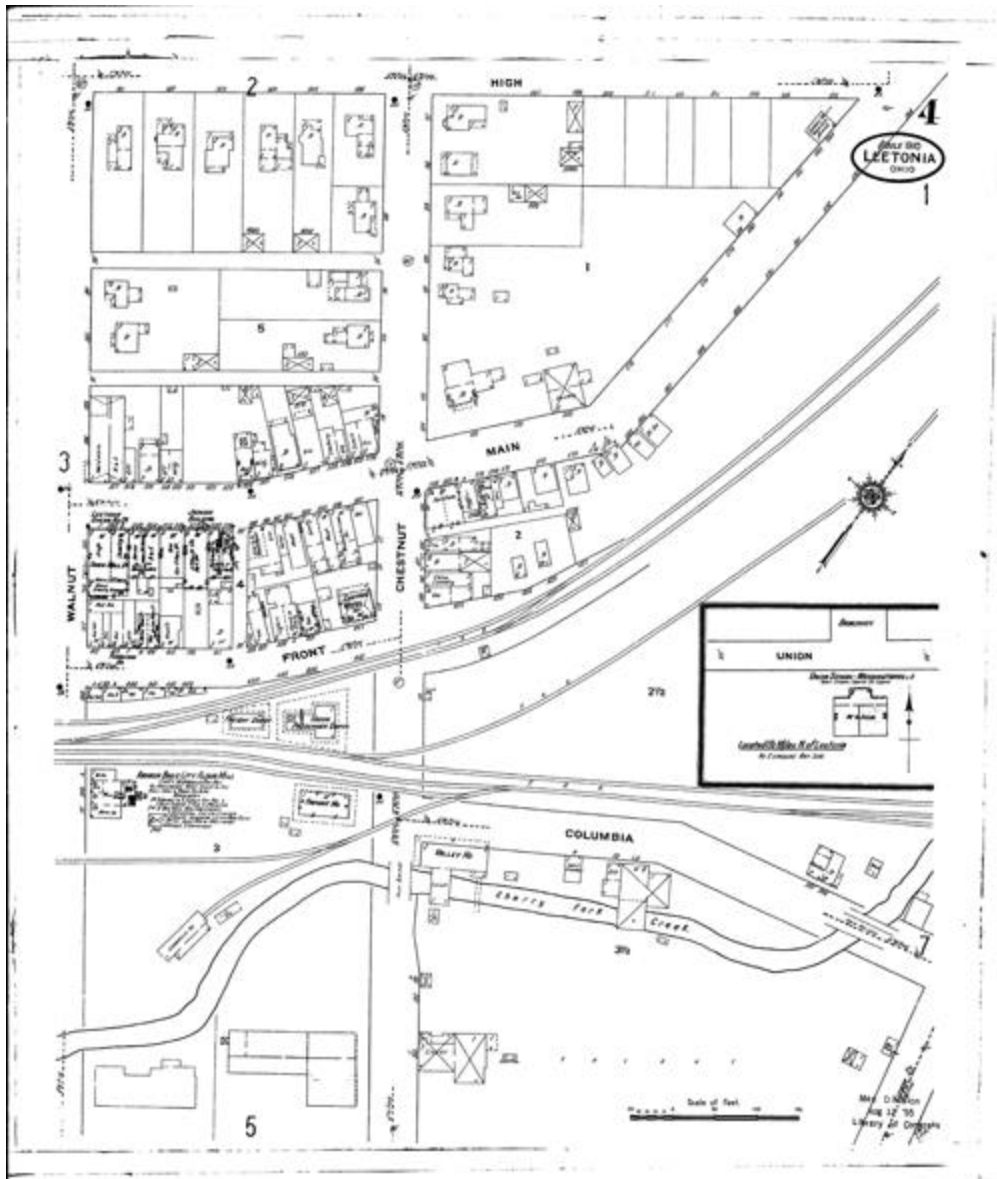
STREETS: Chestnut [401-418]; Elm [401-421]; High [301-314]; Oak [301-317]; Park; Summit; Walnut [501-528];

SPECIALS: Fire Department Chemical Co.; First Presbyterian Church; Union School



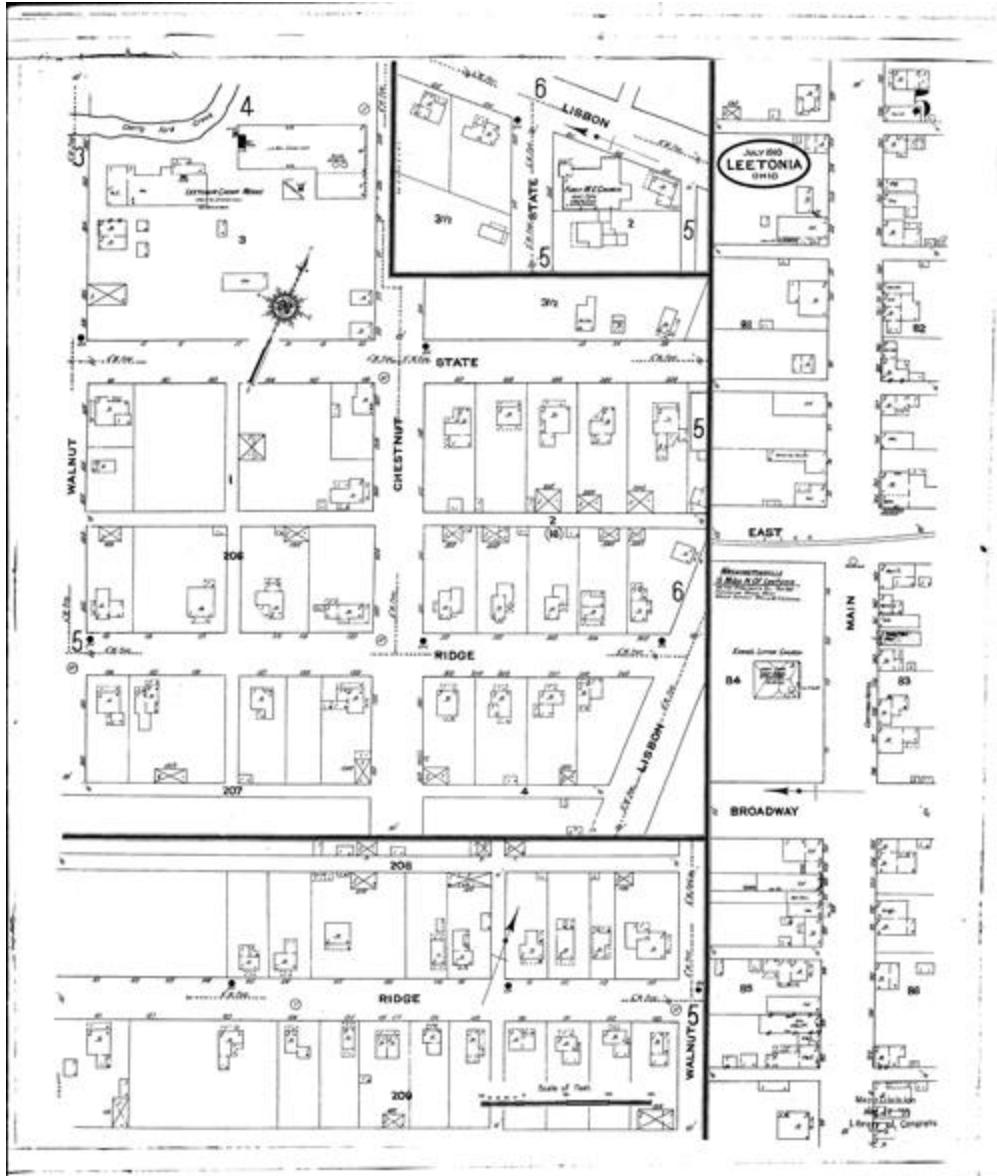
STREETS: Elm [91-117]; Front [317-320]; Front [401-411]; Front [428-438]; High [401-415]; Main [408-414]; Main [423-427]; Main [501-516]; Main [534-551]; Oak [23-25]; Walnut [197-200]; Walnut [211-233];

SPECIALS: Fire Department Hose House; Leetonia Boiler Co.; Leetonia Light & Elec. Power Co.; Leetonia Tool Co. Miners' Tools M'g; Mellinger I. F. Planing Mill and Lumber Dealer; P. R. R. Freight House; St. Patrick's R. C. Church & School; Standard Oil Co.; Wick Block



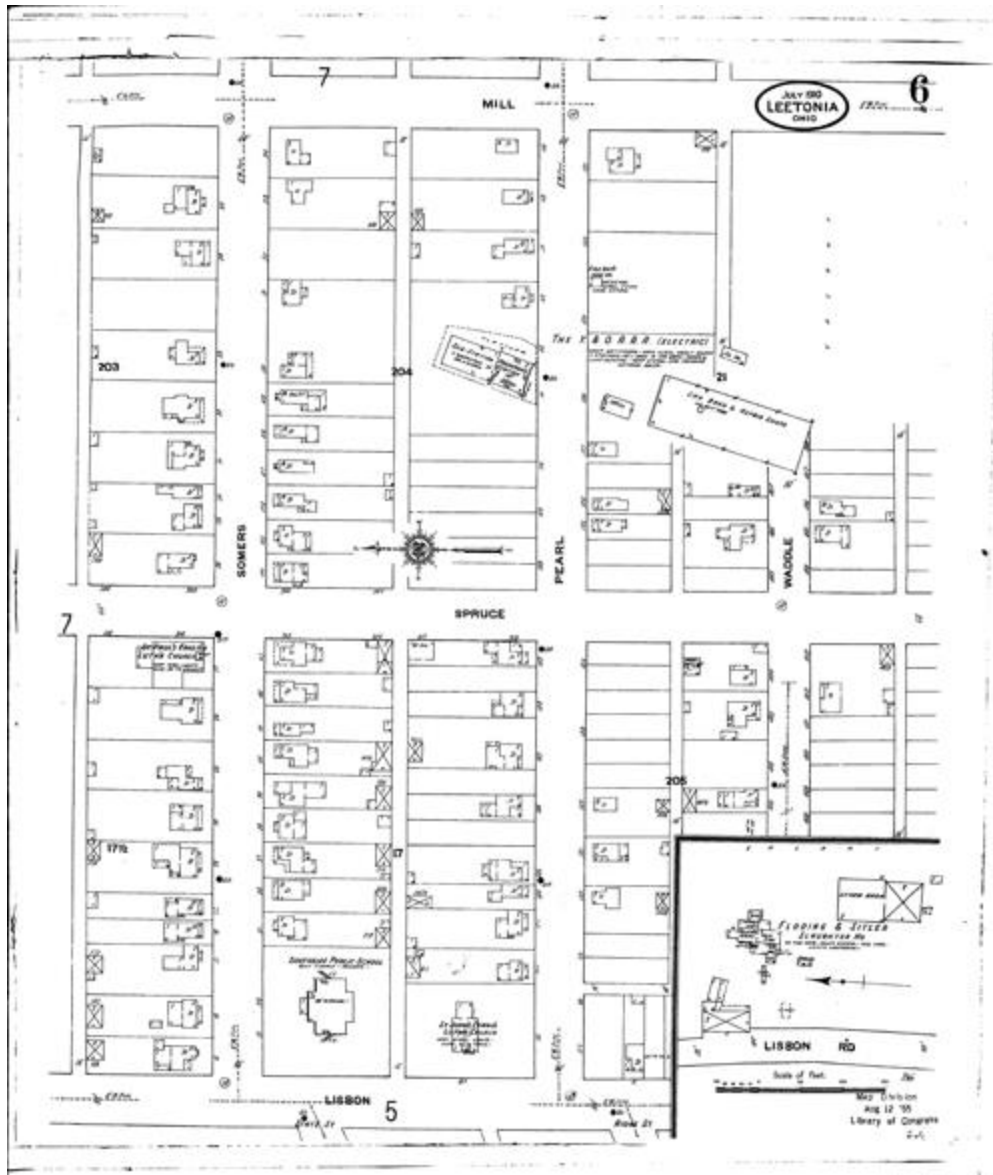
STREETS: Chestnut [97-203]; Columbia [113-206]; Front [412-427]; Front [439-447]; High [501-515]; Lisbon W. S. [near Columbia]; Main [517-533]; Main [552-594]; Union at Washingtonville; Walnut [201-210];

SPECIALS: Central Hotel; Erie R. R. Freight Depot; Ferguson House; Jackson Building; Leetonia Opera House; P. R. R. Locomotive House; Post Office; Rankin Bros. City Flour Mill; Town Hall; Union Passenger Depot; Union School at Washingtonville; Valley House



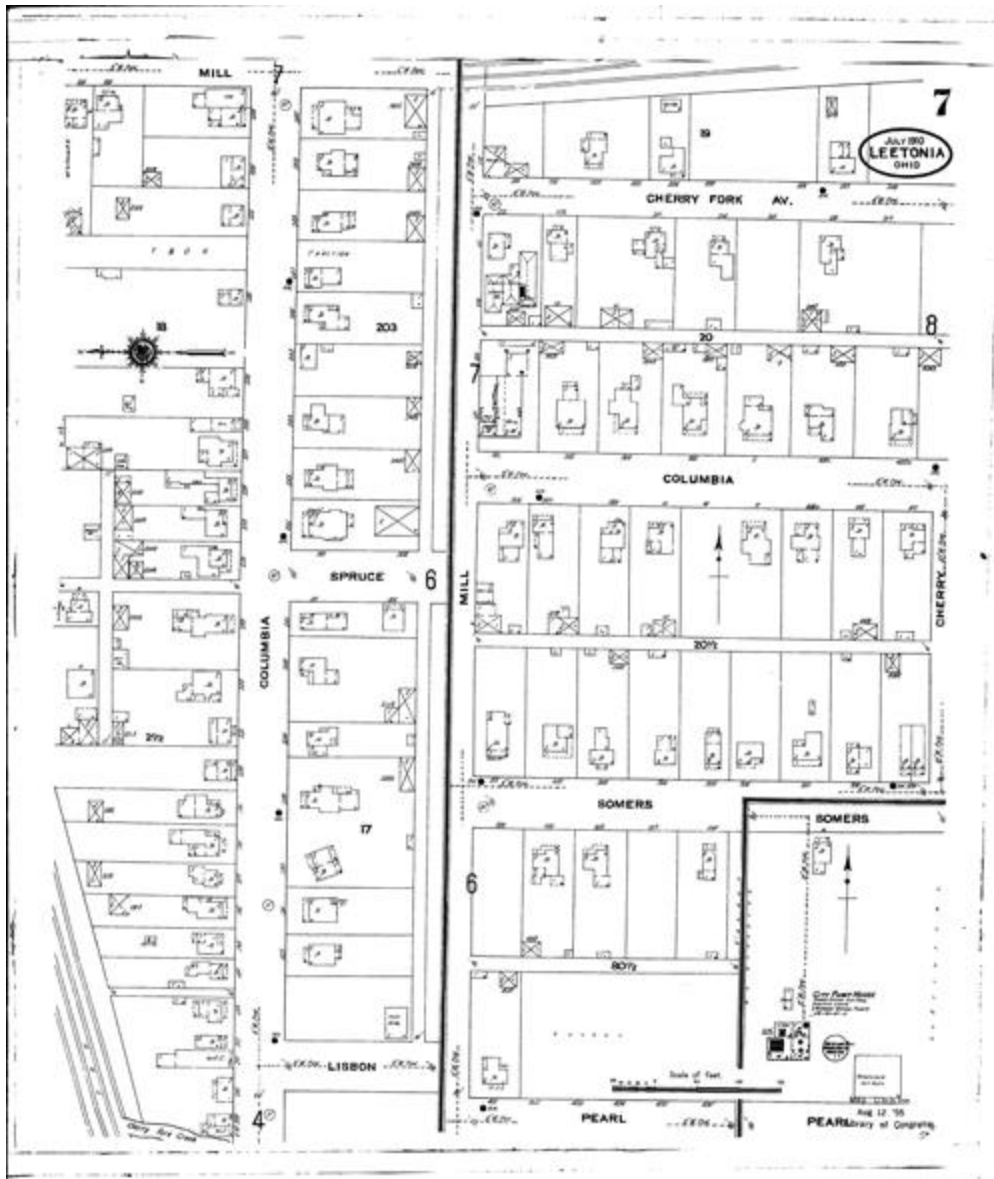
STREETS: Broadway at Washingtonville; Chestnut [208-213]; Chestnut [801-814]; East at Washingtonville; Lisbon [101-105]; Lisbon [near Ridge]; Main at Washingtonville [701-750]; Ridge; State [15-24]; State [191-205]; Walnut W. S. [near Ridge]; Walnut [302-306]; Walnut [900-906];

SPECIALS: Cottage Hotel; Evangelical Lutheran Church; First Methodist Episc.I Church; Leetonia China Works; Post Office at Washingtonville



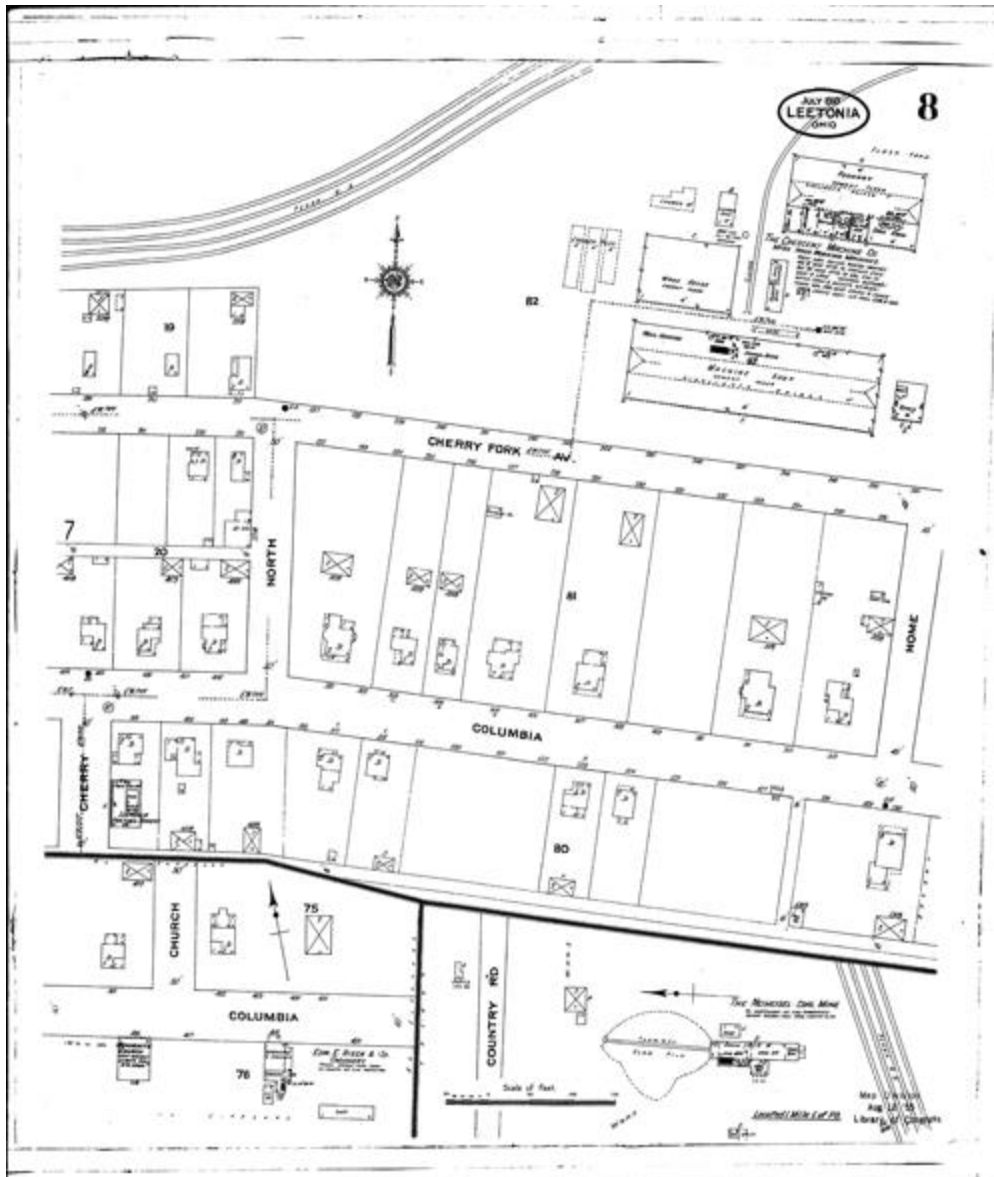
STREETS: Lisbon E. S. N. of Somers to S. of Pearl; Lisbon Road; Mill W. S. N. of Somers to S. of Pearl; Pearl [101-131]; Somers [15-54]; Spruce [304-307]; Spruce [313-318]; Waddle;

SPECIALS: Fire Department Hose House; Floping & Sittler Slaughter House; St. John's Evang'l Luth. Church; St. Paul's English Luth. Church; Y. & O. R. R. R. (Elec.); Car Barn and Repair Shop; Y. & O. R. R. R. (Elec.); Passenger Station



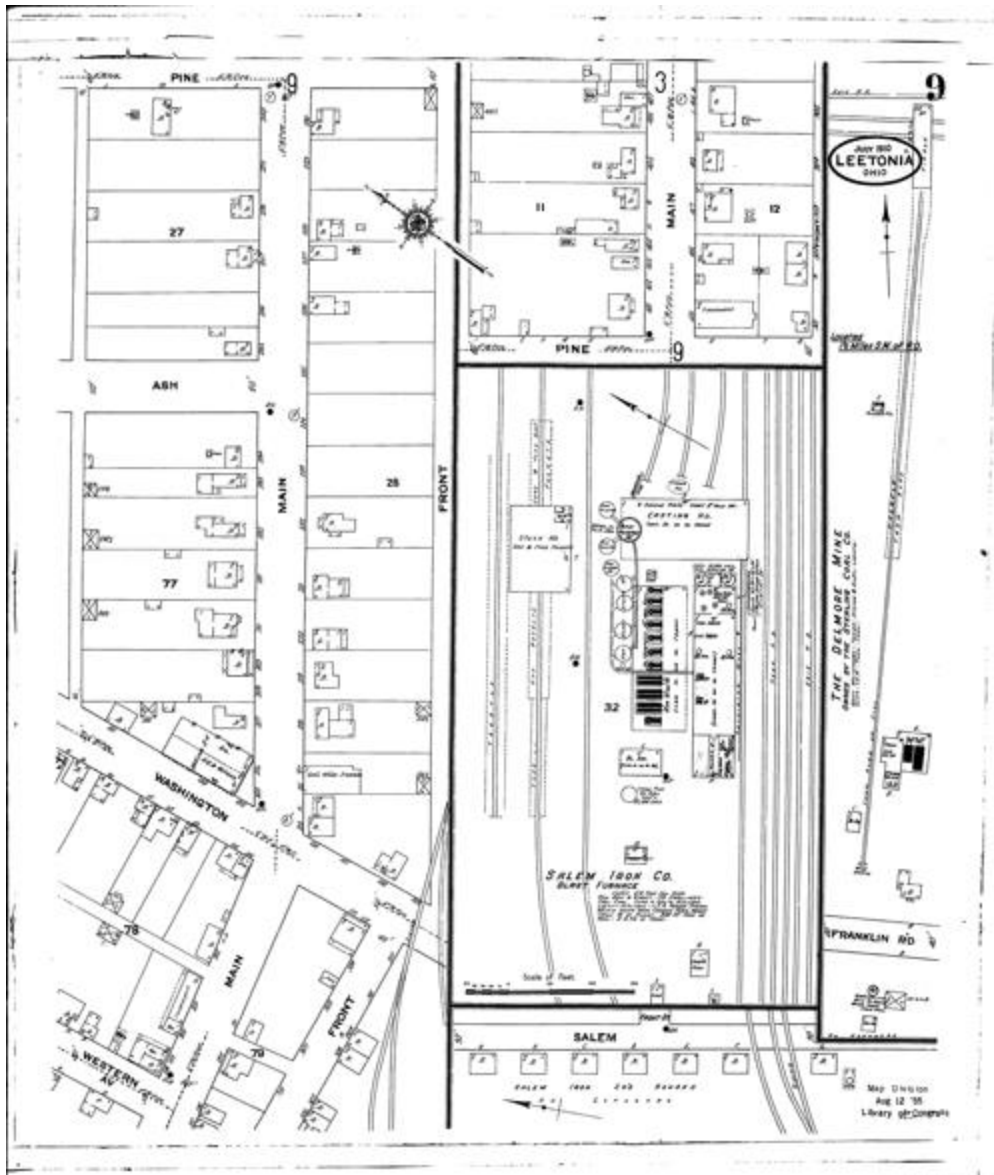
STREETS: Cherry; Cherry Fork Ave. [201-208]; Cherry Fork Ave. [212-217]; Columbia [208-249]; Columbia [302-308]; Columbia [401 A-402 A]; Columbia [409 A-411]; Lisbon E. S. [near Columbia]; Mill [103-111]; Pearl [401-406]; Pearl [near City Pump House]; Somers [196-209]; Somers [near City Pump House]; Spruce [301-302]; Spruce [311-312];

SPECIALS: City Pump House



STREETS: Cherry; Cherry Fork Ave. [209-211]; Cherry Fork Ave. [218-251]; Church; Columbia [401-409]; Columbia [501-530]; Country Road; Home; North;

SPECIALS: Crescent Mach. Co. Woodworking Machinery M'fg; Leetonia Pretzel Bakery; Mennonite Church; Neiheisel Coal Mine; Rieck E. E. & Co. Creamery



STREETS: Ash; Franklin Road; Front [301-311]; Main [194-240]; Main [401-407]; Main [415-419]; Pine [1-14]; Salem; Washington; Western Ave.;

SPECIALS: Delmore Mine The; Salem Iron Co. Blast Furnace; Southside Public School; Sterling Coal Co. Mine